

www.versa-valves.com
e-mail: sales@versa-valves.com



THE COMMITMENT CONTINUES

Fluid Power is our business. It is our only business, so we have to be good at it. Since its beginning in 1949, Versa has maintained its commitment to quality products and satisfied customers.

Versa has succeeded in serving industry's needs with a broad line of directional control devices. Our focus on product variety, technical expertise and company support remains constant. It all begins with a responsiveness to industry needs and ends with delivery of the valve or system you need—when you need it.

We view ourselves as problem solvers and that role requires more than making good products. It is what we do before and after that is equally important. From drawing board to user satisfaction, our commitment is continuous.

HOW WE PUT IT TOGETHER IS WHAT SETS US APART

Versa is not the biggest manufacturer of directional control valves, so we try to be the best.

Design, manufacture, quality control, pricing, delivery - whatever the function - it must be geared to customer needs.

Many companies sell valves. At Versa we sell satisfaction.

QUALITY IS ABSOLUTE

Quality has no degrees at Versa. There is no such thing as "pretty good" or "almost right". Every product is designed and manufactured to conform to uniformly high standards.

These standards are assured by a quality management system which includes ISO 9001 certification and testing of all products prior to shipment.

No matter how tough the application or environmental demands, Versa offers you a choice of valves to meet the challenge. Advanced design, durable construction materials and rigid manufacturing standards provide valves you can rely on for years of trouble-free performance.

Be it a single valve or a pneumatic system, Versa's commitment to quality is uncompromising. Count on it.



WORLDWIDE ACCESSIBILITY

More than 500 fluid power representatives and over 100 stocking locations comprise Versa's worldwide distribution system. They are supported by manufacturing and technical centers in the United States and The Netherlands.

The distributor network is the key to customer service and the source of continuous application feedback. Versa uses this input as part of its research and development program in an effort to respond to individual and industry needs.

Versa makes certain that our distributors' sales and service personnel receive factory training on an ongoing basis. This includes basic theory, product indoctrination and seminars.

Our distributor family is a source of pride to Versa—but more important—it is a source of support and service to all of our customers.

Contact Versa for the distributor servicing your specific area.





C5 SERIES VALVES

Design: Packed balance spool

Construction: Anodized Aluminum body, FKM (Fluorocarbon) sealing

Service: Pneumatic-vacuum to 115 psi (8 bar)

Function: Four-Way, multipurpose, 5/2 or 5/3

Port Sizes: 1/8" NPT or G1/8"

Orifice:
0.197" (5mm)

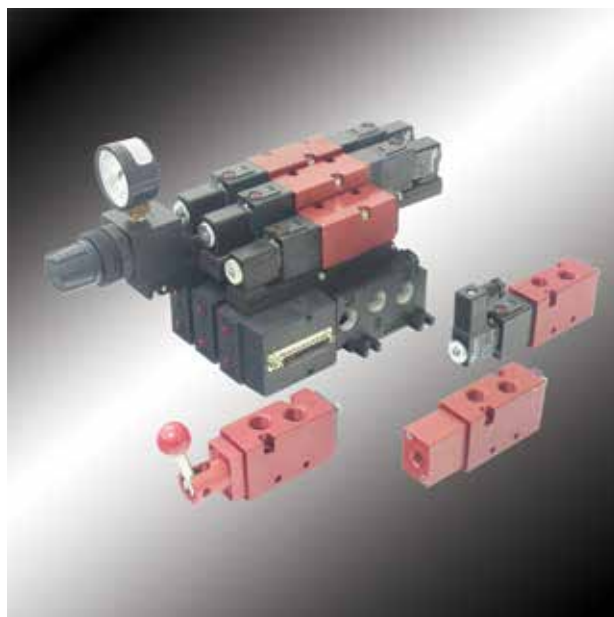
Flow:
Cv 0.75

Style: Side-ported, rack mounting or manifold mounted

Actuation: Solenoid pilot, remote pilot or manual



Bulletin C



C7 SERIES VALVES

Design: Packed balance spool

Construction: Anodized Aluminum body, FKM (Fluorocarbon) sealing

Service: Pneumatic-vacuum to 115 psi (8 bar)

Function: Four-Way, multipurpose, 5/2 or 5/3

Port Sizes: 1/4" NPT or G1/4"

Orifice:
0.276" (7mm)

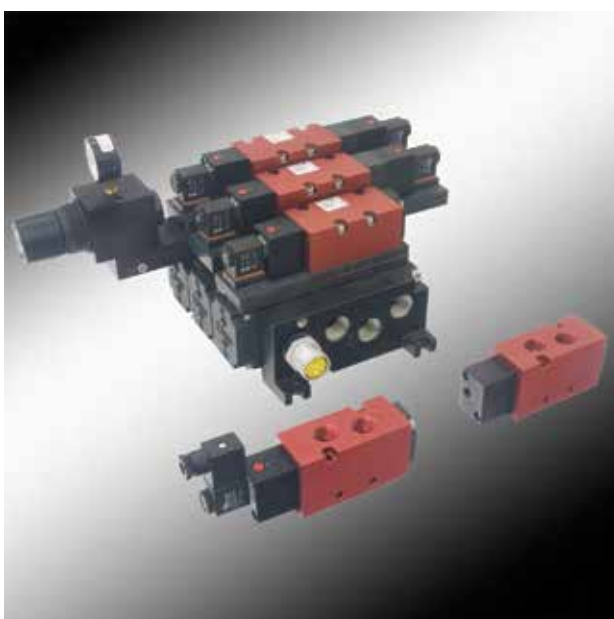
Flow:
Cv 1.6

Style: Side-ported, rack mounting or manifold mounted

Actuation: Solenoid pilot, remote pilot or manual



Bulletin C



C9 SERIES VALVES

Design: Packed balance spool

Construction: Anodized Aluminum body, FKM (Fluorocarbon) sealing

Service: Pneumatic-vacuum to 150 psi (10.3 bar)

Function: Four-Way, multipurpose, 5/2 or 5/3

Port Sizes: 1/2" NPT or G1/2"

Orifice:
0.354" (9mm)

Flow:
Cv 4.1

Style: Side-ported or manifold mounted

Actuation: Solenoid pilot or remote pilot



Bulletin C



SERIES E TYPE VALVES EZ Bantam VALVES

Design: Direct acting poppet

Construction: Anodized Aluminum, Buna or FKM (Fluorocarbon) sealing

Service: Pneumatic-vacuum to 500 psi (35 bar)
Hydraulic to 500 psi (35 bar)

Function: Two-Way, Three-Way, multipurpose, 2/2 or 3/2

Port Sizes: 1/8" NPT

Orifice: 0.031" to 0.125" (0.8 to 3.2mm)

Flow: Cv 0.022 to 0.26

Style: Side-ported or manifold mounted

Actuation: Solenoid



Bulletin: E



E5 Compact VALVES

Design: Direct acting poppet

Construction: Stainless Steel body, Buna or FKM (Fluorocarbon) sealing

Service: Pneumatic-vacuum to 500 psi (35 bar)
Hydraulic to 500 psi (35 bar)

Function: Two-Way, Three-Way, multipurpose, 2/2 or 3/2

Port Sizes: 1/8" NPT

Orifice: 0.031" to 0.125" (0.8 to 3.2mm)

Flow: Cv 0.022 to 0.26

Style: Side-ported

Actuation: Solenoid



Bulletin: E



E Full Size VALVES

Design: Direct acting poppet

Construction: Anodized Aluminum or Stainless Steel body, Buna or FKM (Fluorocarbon) sealing

Service: Pneumatic-vacuum to 500 psi (35 bar)
Hydraulic to 500 psi (35 bar)

Function: Two-Way, Three-Way, multipurpose, 2/2 or 3/2

Port Sizes: 1/8" or 1/4" NPT

Orifice: 0.047" to 0.25" (1.2 to 6.4mm)

Flow: Cv 0.06 to 0.79

Style: Side-ported or manifold mounted

Actuation: Solenoid



Bulletin: E



SERIES V, and T VALVES

Design: Packed balance spool

Construction: V Series-Forged Brass body, Buna or FKM (Fluorocarbon) sealing
T Series-Forged Brass body, Teflon (TFE) sealing

Service: V Series-Pneumatic-vacuum to 200 psi (14 bar)
T Series-Hydraulic to 500 psi (35 bar)

Function: Two-Way, Three-Way, Four-Way, multipurpose, 2/2, 3/2, 3/3, 5/2 or 5/3

Port Sizes:	Orifice:	Flow:
1/8" NPT or G1/8"	0.375" (9.5mm)	Cv 1.4
1/4" NPT or G1/4"	0.375" (9.5mm)	Cv 1.8
3/8" NPT or G3/8"	0.625" (16mm)	Cv 3.4
1/2" NPT or G1/2"	0.625" (16mm)	Cv 4.0
3/4" NPT or G3/4"	1.063" (27mm)	Cv 9.7
1" NPT or G1"	1.063" (27mm)	Cv 11.1
1 1/4" NPT or G1 1/4"	1.25" (32mm)	Cv 14.9

Style: Side-ported or manifold mounted

Actuation: Solenoid pilot, remote pilot, manual or mechanical



Bulletin: VT



SERIES B VALVES

Design: Packed spool

Construction: Brass body, Stainless plunger, Buna or FKM (Fluorocarbon) sealing

Service: Pneumatic-vacuum to 200 psi (14 bar)
Hydraulic to 500 psi (35 bar)

Function: Two-Way, Three-Way, 2/2 or 3/2

Port Sizes:	Orifice:	Flow:
1/8" NPT	0.188" (4.7mm)	Cv 0.6

Style: Side-ported or manifold mounted

Actuation: Manual, mechanical or remote pilot



Bulletin: B



SERIES H VALVES

Design: Poppet

Construction: Stainless Steel or Aluminum

Sealing: Ceramic/PEEK (pneumatic)
Ceramic/Stainless sealing (hydraulic)

Service: Pneumatic- to 3600 psi (245 bar)
Hydraulic- to 10,000 psi (680 bar)

Function: Two-Way, Three-Way 2/2 or 3/2

Port Sizes: 1/8" to 1" NPT or G

Flow: Up to 10.5 (40) GPM (l/min)

Style: Subplate mounted

Actuation: Solenoid pilot or remote



Bulletin: H-Tech



SERIES C-316 VALVES

Design: Packed balance spool

Construction: Stainless Steel body, FKM (Fluorocarbon) sealing

Service: Pneumatic-vacuum to 150 psi (10 bar)

Function: Three-Way, Four-Way, multipurpose, 3/2 or 5/2

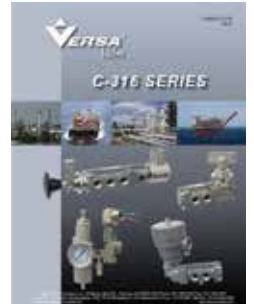
Port Sizes: 1/4" NPT or G1/4

Orifice: 0.32" (8.1mm)

Flow: Cv 2.0

Style: Side-ported

Actuation: Solenoid pilot,
remote pilot,
manual or
mechanical



Bulletin: C316



SERIES V-316 VALVES

Design: Packed balance spool

Construction: Stainless Steel body,
FKM (Fluorocarbon) sealing

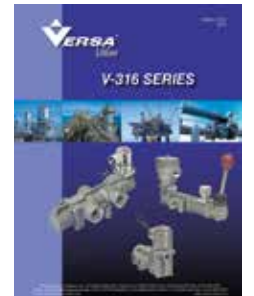
Service: Pneumatic-vacuum to 200 psi (14 bar)
Hydraulic to 400 psi (35 bar)

Function: Three-Way, Four-Way,
multipurpose, 3/2, 3/3, 5/2 or 5/3

Port Sizes:	Orifice :	Flow:
1/4" NPT	0.375" (9.5mm)	Cv 1.4
3/8" NPT	0.375" (9.5mm)	Cv 1.8
1/2" NPT	0.625" (16mm)	Cv 5.5
1" NPT	1.063" (27mm)	Cv 11.1

Style: Side-ported

Actuation: Solenoid pilot, remote pilot
and manual



Bulletin: V316



Modular Air Package CMAP VMAP

Design: Modular actuator control system with integral Filter, Regulator and Valve modules. Optional speed controls and check valves also available.

Construction: Stainless Steel body, FKM (Fluorocarbon) sealing

Service: Pneumatic- to 175 psi (12 bar)
Three-Way, Four-Way, multipurpose, 3/2, 3/3, 5/2
or 5/3

Port Sizes:	Function:	Flow:
CMAP 1/4" NPT	Three-Way	Cv 1.5
VMAP 1/4" or 1/2" NPT	Three-Way, Four-Way	Cv 1.9 to 4.8

Style: Side-ported, Versa exclusive manifold
system for custom circuitry.

Actuation: Solenoid pilot, remote pilot or manual.



Bulletin: C316



Bulletin: VMAP



NAMUR VALVES

For Direct Mounting to Actuators

Construction: E5 Anodized Aluminum
C5 Anodized Aluminum
C-316 Stainless Steel
FKM (Fluorocarbon) sealing

Service: Pneumatic to 150 psi (10.3 bar)

Function: Three-Way, Four-Way, 3/2, 3/3, 5/2 or 5/3

Series:	Orifice:	Flow:
E5:	0.031" (3.2mm)	Cv 0.08
C5:	0.197" (5mm)	Cv 0.75
C-316:	0.30" (7.6mm)	Cv 1.6

Port Sizes: 1/4" NPT (G 1/4 C5)

Style: NAMUR mount

Actuation: Solenoid pilot, remote pilot and manual



Bulletin: NMce



AR-316 SERIES

Stainless Steel Regulator

Design: Packed balance pintle

Construction: Stainless Steel body, FKM (Fluorocarbon) sealing

Service: Pneumatic-to 290 psi (20 bar)

Models: Regulator only, Filter/Regulator and Filter only

Port Sizes:	Flow:
1/4" NPT	Cv 2.1
1/2" NPT	Cv 4.2
1" NPT	Cv 11.1

Style: Side-ported



Bulletin: AR-316



ACCESSORIES

Function:

Bleed Control Valves
Bleed Valves
Block & Bleed Valves
Dust Excluders
Electrical Quick Exhaust Valves
Flow Control Valve
Quick Exhaust Valves
Relief Valve
Shuttle Valves
Status Indicators



Bulletin: ACC



www.versa-valves.com

WORLD HEADQUARTERS:
Versa Products Company, Inc.
22 Spring Valley Road
Paramus, NJ 07652, USA
Telephone: (201) 843-2400
FAX: (201) 843-2931
e-mail: sales@versa-valves.com

EUROPEAN HEADQUARTERS:
Versa B.V.
Prins Willem Alexanderlaan 1429
7312 GB Apeldoorn, The Netherlands
Telephone: +21-55-3681900
FAX: +21-55-3681909
e-mail: sales@versa-valves.com

